

GENERAL CATALOG

HM DIGITAL INC.

LOS ANGELES, USA
SEOUL, SOUTH KOREA
QINGDAO, CHINA
NEW DELHI, INDIA



General Catalog

- New Products*
- Salinity Meters*
- Handhelds*
- Pro Series Handhelds*
- Refractometers*
- Hydromaster Series Monitors*
- Leak Block Sensor (LBS-10)*
- Controllers*
- Sensors/Accessories*

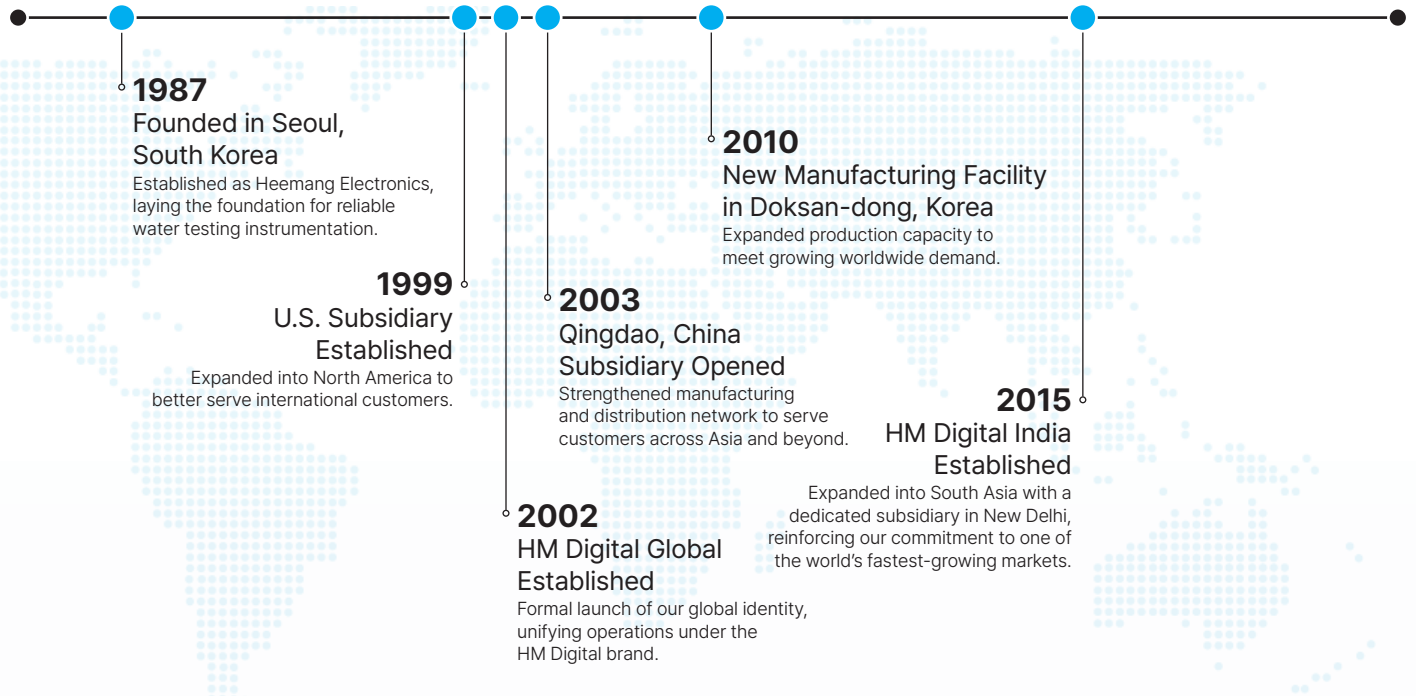


ABOUT HM DIGITAL



Since 1987, HM Digital has proudly served as the foremost provider of top-tier water testing instruments.

Operating from our facilities in Los Angeles, Seoul, Qingdao, and New Delhi, we possess the capability to ship our products worldwide, extending our service to every corner of the globe. Our product range includes handheld meters, in-line monitors, controllers, sensors, and calibration solutions, all of which find application in a multitude of scenarios. These products stand out for their exceptional quality, robust features, and outstanding performance, all while being accessible at an economical cost.

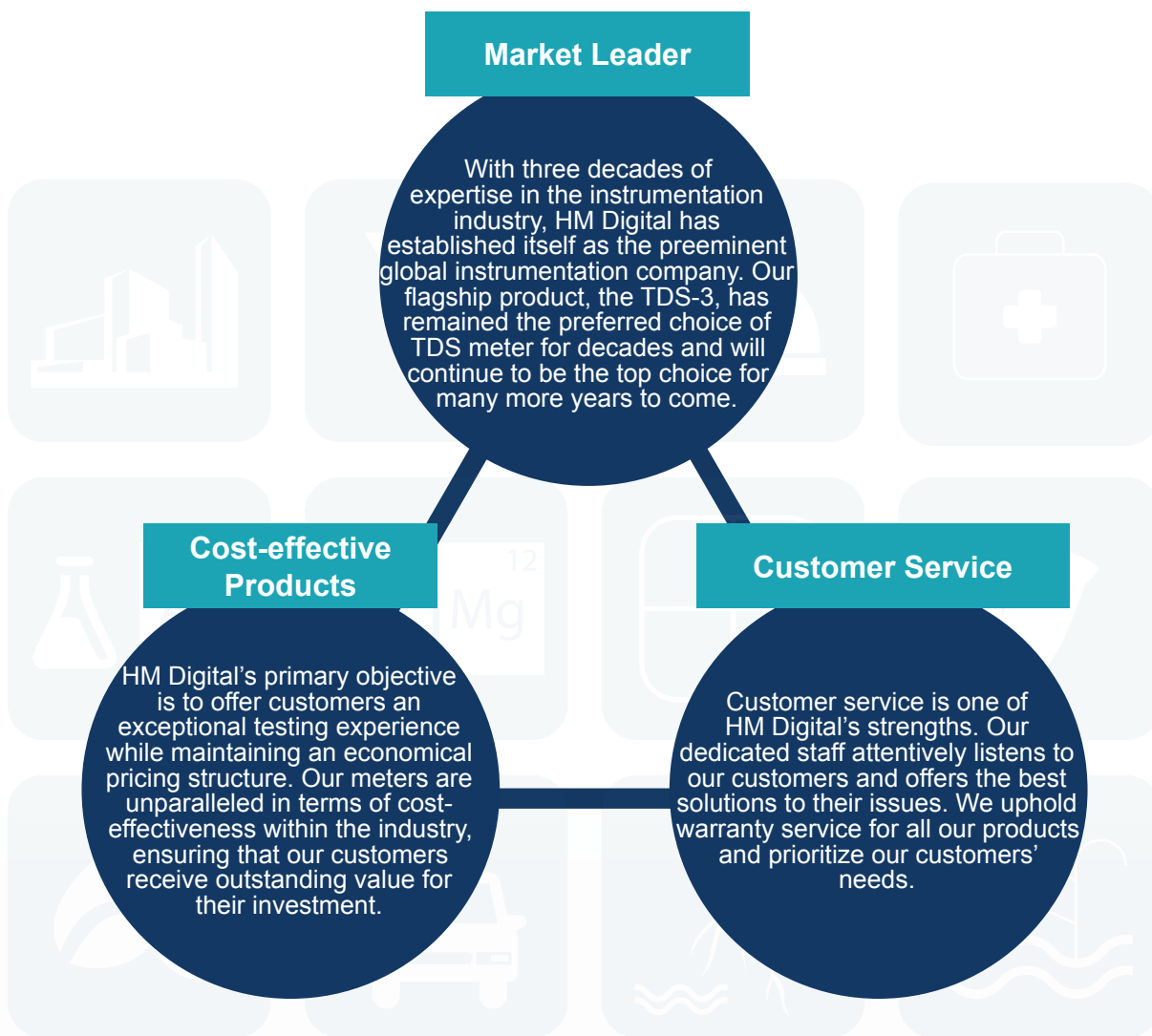


Application

- Pool and Spa
- Commercial / Industrial RO System
- Colloidal Silver Water
- Coffee
- Car Wash
- Window Cleaning
- Water Filter Performance
- Hardness Testing
- Aquariums / Aquaculture
- Health
- Food Service



WHY HM DIGITAL?



Trusted Worldwide Since 1987

For over three decades, HM Digital has been a global leader in water testing solutions. From handheld testers to advanced monitoring systems, our products deliver accuracy, reliability, and value you can trust.

Precision Meets Affordability

We believe cutting-edge technology should be accessible. HM Digital products combine high-quality engineering with cost-effective design, making professional-grade testing available to everyone — from home users to large industries.

Innovation That Works for You

With automatic sensing, smart displays, and robust housing, our meters are designed to simplify your testing process while delivering consistent, reliable results.

Global Support, Local Care

Operating from offices in the U.S., Korea, China, and India, we serve customers in over 100 countries with dedicated support and outstanding service.

ABOUT HM DIGITAL	2	
<hr/>		
NEW PRODUCTS	5	
<hr/>		
DM-3		
PRO SERIES HANDHELDS	6	
<hr/>		
COM-100	COM-300	COM-360
PH-200	ORP-200	COM-300L
COM-100L	PH-200L	
SALINITY METERS	9	
<hr/>		
SAL-1700	SB-2000PRO	SB-1500PRO
HANDHELDS	10	
<hr/>		
EC-3	TDS-3	TDS-4TM
TDS-EZ	COM-80	PH-80
ZT-2	AP-1	AP-2
LEAK BLOCK SENSOR (LBS-10)	12	
<hr/>		
LBS-10		
HM SERIES MONITORS	13	
<hr/>		
HM-100	HM-530	HM-200/ HM-230
REFRACTOMETERS	16	
<hr/>		
SCM-1000	SCM-1000(HI)	BTR-1000(Beer)
RWM-1000	BTR-1000(Brix)	BTR-1000(Coffee)
BTR-1000(Salinity)	BTR-1000(Wine)	
MONITORS	18	
<hr/>		
SM-1	DM-1	TRM-1
DM-2	DM-2EC	QC-1
LSM-100	LDM-100R	FLM-3
PM-1	PM-2	
CONTROLLERS	20	
<hr/>		
PSC-50/ PSC-54	PSC-60D/ PSC-64D	PSC-150
PSC-154	CIC-150/ CIC-150-4	CIC-152/ CIC-152-4
PS-203	PPH-1000	
SENSORS/ ACCESSORIES	22	
<hr/>		

NEW PRODUCTS (DM-3 DUAL TDS MONITOR)

NEW



DM-3 Dual TDS Monitor

The DM-3 is a commercial-grade TDS monitor designed for measuring TDS levels in both feed (input) water and product (output) water of a water filtration system at any given time. The DM-3 boasts a large backlight screen that ensures you can easily read the measurements even in dark environments. Equipped with shielded cables and diagnostic messaging, this robust device is the ideal choice for Reverse Osmosis (RO) and Deionized water (DI) filtration systems, making it well-suited for applications such as drinking or potable water, water treatment, aquariums, hydroponics, and many more.

RANGE	EC: 0~9999 μ S/0~9.99mS TDS: 0~5000ppm/ 0~5ppt
ACCURACY	\pm 2%
RESOLUTION	EC: 0.1 μ S (0~99.9) 1 μ S (100~999) 10 μ S (1000~9990) 0.01mS (0.00~9.99) TDS: 0.1ppm (0~99.9) 1ppm (100~999) 10ppm (1000~5000) 0.01 ppt (0.00~5.00)

ATC	YES
CALIBRATION	Digital
SENSOR	1/4" (2EA)
SENSOR CABLE	1.2m /3.9ft
POWER	2 x AA
SIZE	11.6 x 1.9 x 7.0 cm (4.6 x 0.7 x 2.8 in)
WEIGHT	225g/ 8oz

FEATURES

- Displays TDS levels of the Feed Water (Line1) and Product Water (Line2) simultaneously.
- Automatic Temperature Compensation Function (ATC)
- Digital Calibration
- Shielded Sensor Cables
- Replaceable Sensors



Easy magnetic Wall-mount



Slim Profile



Dual Line Display

PRO SERIES HANDHELDS



COM-100 (EC/TDS METER)

RANGE EC: 0-9990 μ S
0-9.99 mS
TDS: 0-8560ppm 0.7 (442)
0-5000 ppm 0.5 (NaCl)
0-8.56 ppt: 0.7 (442)
0-5.00 ppt; (NaCl)
Temp: 0-55°C /32-130°F

ATC YES

ACCURACY \pm 2%

RESOLUTION EC: 0.1 μ S (0-99)
1 μ S (100-999)
10 μ S (1000-9990)
0.01mS (0-9.99)
TDS: 0.1 ppm (0-99)
1ppm (100-999)
10ppm (1000-8560)
0.01 ppt (0-8.56)
Temp: 0.1°C/°F

CALIBRATION Digital push button

POWER 2 x AAA

SIZE 18.5 x 3.4 x 3.4 cm
(7.3 x 1.3 x 1.3 in)

WEIGHT 127g/4.5oz



COM-300 (EC/TDS /pH)

RANGE pH : 0-14 pH
EC: 0-9990 μ S
0-9.99 mS
TDS: 0-8560ppm 0.5 (NaCl)
0-5000 ppm 0.7 (442)
Temp: 0-50°C /32-122°F

ATC YES

ACCURACY pH: \pm 0.1
EC/TDS: \pm 2%
Temp: \pm 1°C/ \pm 1.8°F

RESOLUTION pH: 0.1pH
EC: 1 μ S (0-999)
10 μ S (1000-9990)
0.01mS (0-9.99)
TDS: 1ppm (0-999)
10ppm (1000-8560)
Temp: 0.1°C/°F

CALIBRATION pH: Automatic in pH4,7, or 10
EC&TDS: Digital push button

POWER 2 x AAA

SIZE 18.5 x 3.4 x 3.4 cm
(7.3 x 1.3 x 1.3 in)

WEIGHT 124g/4.4oz (with batteries)



COM-360 (EC/TDS /pH)

RANGE pH : 0-14 pH
EC: 0-9990 μ S
0-9.99 mS
TDS: 0-8560ppm 0.5 (NaCl)
0-5000 ppm 0.7 (442)
Temp: 0-50°C /32-122°F

ATC YES

ACCURACY pH: \pm 0.1
EC/TDS: \pm 2%
Temp: \pm 1°C/ \pm 1.8°F

RESOLUTION pH: 0.1pH
EC: 1 μ S (0-999)
10 μ S (1000-9990)
0.01mS (0-9.99)
TDS: 1ppm (0-999)
10ppm (1000-8650)
Temp: 0.1°C/°F

CALIBRATION pH: Automatic in pH4,7, or 10
EC&TDS: Digital push button

POWER 2 x AAA

SIZE 20 x 3.4 x 3.4 cm
(7.8 x 1.3 x 1.3 in)

WEIGHT 110g/4.0oz (with batteries)

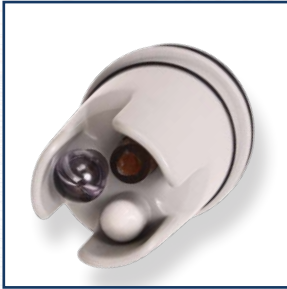
AAA Batteries
and Water
Resistant
Housing



Replaceable
Sensors



Easy and
Quick
Calibration



Superior
Accuracy



The Pro Series comprises professional-grade handheld instruments engineered for versatile performance across a wide range of field applications. These devices deliver exceptional speed and accuracy, complemented by features such as waterproof construction, simple calibration procedures, and easily replaceable sensors. HM Digital's portable measuring instruments are highly regarded in the market for their user-friendly design, reliable performance, and proven durability.



PH-200 (PH METER)

RANGE pH: 0-14 pH
Temp: 0-55°C/ 32-130°F

ATC YES

ACCURACY pH: ± 0.1 pH
Temp: $\pm 1^\circ\text{C}$ / $\pm 1.8^\circ\text{F}$

RESOLUTION pH : 0.01 pH
Temp: 0.1°C/°F

CALIBRATION Automatic in pH4,7, or 10
with fine tune digital
calibration by push
button

POWER 2 x AAA

SIZE 18.5 x 3.4 x 3.4 cm
(7.3 x 1.3 x 1.3 in)

WEIGHT 127g/4.5oz



ORP-200 (ORP METER)

RANGE ORP: -999 to +1000mV
Temp: 0-55°C/ 32-130°F

ATC NO

ACCURACY ± 2 mV

RESOLUTION ORP: 1mV
Temp: 0.1°C/°F

CALIBRATION Digital push button

POWER 2 x AAA

SIZE 18.5 x 3.4 x 3.4 cm
(7.3 x 1.3 x 1.3 in)

WEIGHT 127g/4.5oz

PRO SERIES HANDHELDS



COM-300L

RANGE pH: 0-14 pH
 EC: 0-9990 μ S
 0-9.99 mS
 TDS: 0-8560ppm 0.5 (NaCl)
 0-5000 ppm 0.7 (442)
 Temp: 0-50°C / 32-122°F

ATC YES

ACCURACY \pm 2%

RESOLUTION pH: 0.1pH
 EC: 1 μ S (0-999)
 10 μ S (1000-9990)
 0.01mS (0-9.99)
 TDS: 1ppm (0-999)
 10ppm (1000-8560)
 Temp: 0.1°C/°F

CALIBRATION Digital push button

POWER 2 x AAA

SIZE 39.1 x 3.4 x 3.4 cm
 (15.4 x 1.3 x 1.3 in)

A WEIGHT 164g/5.8oz



COM-100L

RANGE EC: 0-9990 μ S
 0-9.99 mS
 TDS: 0-8560ppm 0.5 (NaCl)
 0-5000 ppm 0.7 (442)
 Temp: 0-55°C / 32-130°F

ATC YES

ACCURACY \pm 2%

RESOLUTION EC: 1 μ S (0-999)
 10 μ S (1000-9990)
 0.01mS (0-9.99)
 TDS: 1ppm (0-999)
 10ppm (1000-8560)
 Temp: 0.1°C/°F

CALIBRATION Digital push button

POWER 2 x AAA

SIZE 39.1 x 3.4 x 3.4 cm
 (15.4 x 1.3 x 1.3 in)

A WEIGHT 164g/5.8oz



PH-200L

RANGE pH: 0-14 pH
 Temp: 0-55°C / 32-130°F

ATC YES

ACCURACY \pm 0.1pH
 Temp: \pm 1°C / \pm 1.8°F

RESOLUTION pH : 0.1 pH
 Temp: 0.1°C/°F

CALIBRATION Automatic in pH4,7, or 10
 with fine tune digital
 calibration by push
 button

POWER 2 x AAA

SIZE 39.1 x 3.4 x 3.4 cm
 (15.4 x 1.3 x 1.3 in)

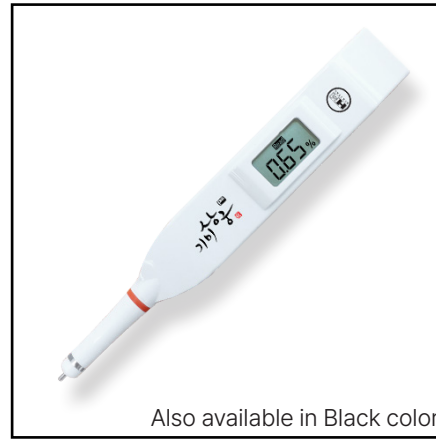
A WEIGHT 164g/5.8oz



SAL-1700

The SAL-1700 is well-suited for measuring salinity in aquariums and fisheries. It offers measurement in three selectable units (PSU, S.G., and ppt), and each unit includes automatic temperature compensation (ATC) for accurate readings even in fluctuating temperatures.

RANGE	PSU: 0.0-55.0 SG: 1.000 ~ 1.042 ppt: 0.0 ~ 105.0 Temp: 0-50°C / 32-122°F
ATC	YES
ACCURACY	PSU: ± 2.0 SG: ± 0.002 ppt: ± 2.0(0.0~55.0) ± 5.0(55.1~100.0) Temp: ±0.5°C/ ±1.0°F
RESOLUTION	PSU: 0.1 SG: 0.001 ppt: 0.1 Temp: 0.1°C/°F
SENSOR	Platinum
CALIBRATION	Digital
POWER	2 x AAA
SIZE	21.6 x 3.4 x 3.4 cm (8.5 x 1.3 x 1.3 in.)
WEIGHT	100g/3.5oz (with batteries)



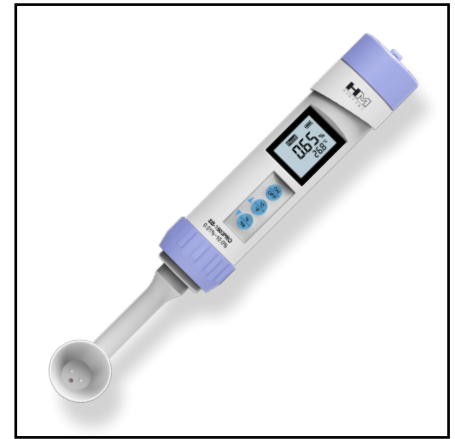
Also available in Black color



SB-2000PRO

The SB-2000PRO is an incredibly convenient salinity meter that activates automatically when immersed in a solution. With its built-in ATC (Automatic Temperature Compensation) function, the SB-2000PRO maintains accuracy even in extreme temperature conditions, be it high or low. Furthermore, this meter provides a vibration alert to notify the user when the measurement is complete, enhancing its usability.

RANGE	0.01~10.0%
ATC	YES
ACCURACY	0.1 ~ 2.0%: ±0.1% 2.1 ~ 3.0%: ±0.2% 3.1 ~ 5.0%: ±0.3% 5.1 ~ 10.0%: ±0.5%
RESOLUTION	0.01% (0.01%-2.99%) 0.1% (3.0%-10.0%)
SENSOR	Platinum
CALIBRATION	Factory calibrated
POWER	2 x AAA
SIZE	17 x 2.5 x 2.46 cm (7 x 1 x 1 in.)
WEIGHT	65g/2.3oz (with batteries)
COLOR	White or Black



SB-1500PRO

The SB-1500PRO is a spoon-type salinity meter suitable for a wide range of applications, including industrial, commercial, and home use. This versatile meter is capable of measuring not only salinity but also the sodium content in food, which is expressed in milligrams.

RANGE	0.01%~10.0% Temp: 1-99.9°C / 33-212°F
ATC	YES
ACCURACY	0 ~ 2.00%: ±0.1% 2.01 ~ 3.0%: ±0.2% 3.1 ~ 4.0%: ±0.3% 4.1 ~ 5.0%: ±0.4% 5.1 ~ 8.0%: ±0.5% 8.1 ~ 10.0%: ±0.6% Temp: ±1.0°C/ ±1.8°F
RESOLUTION	0.01% (0.01%-2.99%) 0.1% (3.0%-10.0%) Temp: 0.1°C/°F
SENSOR	Platinum
CALIBRATION	Digital
POWER	2 x AAA
SIZE	21.6 x 3.4 x 3.4 cm (8.5 x 1.3 x 1.3 in.)
WEIGHT	100g/3.5oz (with batteries)



EC-3

RANGE	0-9999 μ S
need to cha	Temp: 0-80°C / 32-176°F
ATC	YES
ACCURACY	\pm 2%
RESOLUTION	1 μ S
CALIBRATION	Screw type
POWER	2 x LR44
SIZE	15.5 x 3.1 x 2.3 cm (6.1 x 1.25 x 1.0 in)
WEIGHT	77g/2.7oz (with case)



TDS-3

RANGE	0-9990 ppm
Temp:	0-80°C / 32-176°F
ATC	YES
ACCURACY	\pm 2%
RESOLUTION	1 ppm
CALIBRATION	Screw type
POWER	2 x LR44
SIZE	15.5 x 3.1 x 2.3 cm (6.1 x 1.25 x 1.0 in)
WEIGHT	77g/2.7oz (with case)



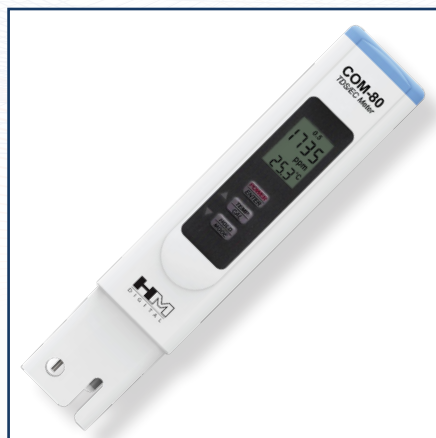
TDS-4TM

RANGE	0-9990 ppm
Temp:	0-80°C / 32-176°F
ATC	YES
ACCURACY	\pm 2%
RESOLUTION	1 ppm
CALIBRATION	Screw type
POWER	2 x LR44
SIZE	14 x 2.3 x 1.5 cm (5.5 x 0.9 x 0.75 in)
WEIGHT	32g/1.2oz (with batteries)



TDS-EZ

RANGE	0-9990 ppm
ATC	YES
ACCURACY	\pm 3%
RESOLUTION	1ppm
CALIBRATION	Screw type
POWER	2 x LR44
SIZE	15.5 x 3.1 x 2.3 cm (6.1 x 1.25 x 1.0 in)
WEIGHT	77g/2.7oz



COM-80

RANGE	0-9999 μ S/ 0-9.9 mS
	0-5000 ppm (0.5 Scale)
	0-8560 ppm (0.7 Scale)
Temp:	0-55°C / 32-130°F
ATC	YES
ACCURACY	\pm 2%
RESOLUTION	1 μ S; 0.1mS
	1ppm; 0.1°C/°F
CALIBRATION	Digital
POWER	3 x LR44
SIZE	15.3 x 3.2 x 1.8 cm (6.0 x 1.3 x 0.7 in)
WEIGHT	55g/1.9oz (with batteries)



PH-80

RANGE	0-14 pH
Temp:	0-55°C / 32-130°F
ATC	YES
ACCURACY	\pm 0.2pH
RESOLUTION	0.1 pH; 0.1°C/°F
CALIBRATION	Auto at 4, 7, 10 pH
POWER	3 x LR44
SIZE	15.3 x 3.2 x 1.8 cm (6.0 x 1.3 x 0.7 in)
WEIGHT	65g/2.3oz (with batteries)

HANDHELDS



ZT-2

RANGE	0-999 ppm
ATC	YES
ACCURACY	± 3%
RESOLUTION	1ppm
CALIBRATION	Screw type
POWER	2 x LR44
SIZE	14 x 2.3 x 1.5 cm (5.5 x 0.9 x 0.75 in)
WEIGHT	32g/1.2oz (with case)



AP-1

RANGE	0-5000ppm Temp: 0-80°C / 32-176°F
ATC	YES
ACCURACY	± 2%
RESOLUTION	1 ppm
CALIBRATION	Digital
POWER	1 x CR2032
SIZE	15.0 x 2.8 x 1.3 cm (5.9 x 1.1 x 0.5 in)
WEIGHT	43g/1.5oz (with batteries)



AP-2

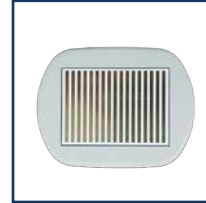
RANGE	0-9999µS Temp: 0-80°C / 32-176°F
ATC	YES
ACCURACY	± 2%
RESOLUTION	1 µS
CALIBRATION	Digital
POWER	1 x CR2032
SIZE	15.0 x 2.8 x 1.3 cm (5.9 x 1.1 x 0.5 in)
WEIGHT	43g/1.5oz (with batteries)

LEAK BLOCK SENSOR (LBS-10)



LBS-10

TEMP RANGE	1~60°C / 34~140°F
MAX. FLOW RATE	6 GPM / 23 LPM
MAX. PRESSURE	116 psi / 8.0 bar ±10%
CONNECTION	3/8" NPT, 1/2" BSP
POWER	1 X 9V Battery
WEIGHT	308g/10.8oz
CABLE	1M/3.2ft



Large and accurate sensor



ID: 3/8" NPT
OD: 1/2" BSP

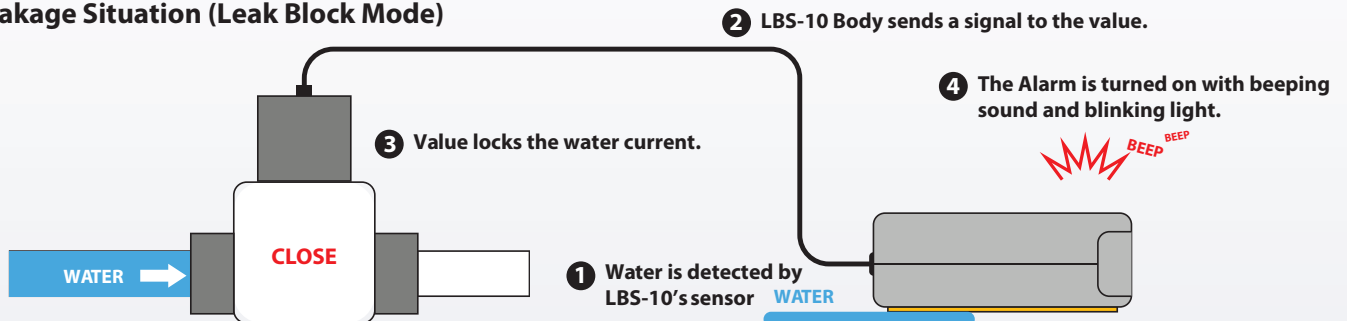


Available with various fittings

Normal Situation (Standby Mode)



Leakage Situation (Leak Block Mode)



HM-100 Continuous pH/EC/TDS/Temp Monitor



HM-100

RANGE pH: 0~14pH
 EC: 0-10mS
 TDS: 0~9990 ppm
 Temp: 0.0~60°C/ 32~140°F

ATC YES

ACCURACY pH: ± 0.1pH
 EC: ± 2%
 TDS: ± 2%
 Temp: ±1°C / ±1.8°F

RESOLUTION pH: 0.1pH

EC:
 0.01mS (0.01~10.00)

TDS:
 1ppm (0~999)
 10ppm (1000~9990)

Temp: 0.1°C/°F

CALIBRATION Digital

POWER DC 5V

SIZE 20.0 x 11.0 x 3.3 cm
 (7.9 x 4.3 x 1.4 in)

A WEIGHT 285g/10.1oz

FEATURES

- pH / EC / TDS / temperature measurement
- Various units: pH, mS, ppm, 0.5 (NaCl) & 0.7 (442™)
- Automatic Temperature Compensation Function (ATC)
- Digital calibration method
- Displays pH / EC or TDS / temperature simultaneously.
- Replaceable sensors



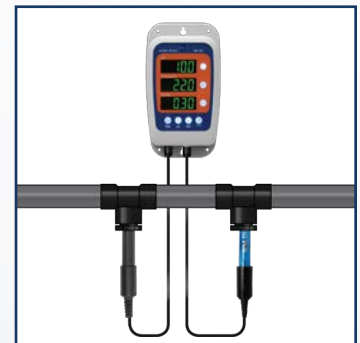
Large Screen,
Simple Control



Wall-mount



Plug Type Sensor



Continuous
Monitoring

HM-530 Hydromaster pH/EC/TDS/Temp Combo Monitor



HM-530

RANGE
 pH: 0~14pH
 EC: 0~9990 μ S/0~20mS
 TDS: 0~9990ppm/ 0~10ppt
 DO: 0~200% / 0 ~ 20.0mg/L
 Temp: 0~55°C/ 32~130°F

ACCURACY
 pH: ± 0.1 pH
 EC: $\pm 2\%$
 TDS: $\pm 2\%$
 DO: $\pm 2\%$
 Temp: $\pm 1^\circ\text{C}$ / $\pm 1.8^\circ\text{F}$

RESOLUTION
 pH: 0.1pH
 EC:
 0.1 μ S (0~99.9)
 1 μ S (100~999)
 10 μ S (1000~9990)
 0.01mS (0.01~20.00)
 TDS:
 0.1ppm (0~99.9)
 1ppm (100~999)
 10ppm (1000~9990)
 0.01 ppt (0.01~10.00)
 DO: 1% / 0.1mg/L
 Temp: 0.1°C/°F

ATC YES

CALIBRATION Digital

POWER Rechargeable Li-ion Battery

SIZE
 20 x 11 x 3.6 cm
 (8 x 4 x 1.4 in)

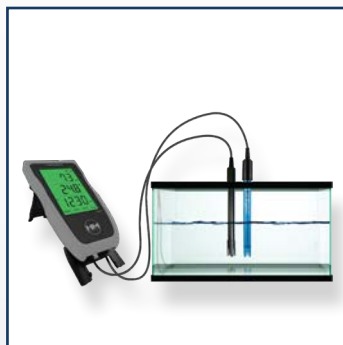
WEIGHT 430g/15.1oz

FEATURES

- Continuous pH / EC (conductivity) / TDS / DO (Dissolved Oxygen) temperature monitoring
- Rechargeable battery
- Various usage: Portable / Wall-mount / Bench-top
- Auto OFF function: 5 minutes
- Alarm: High set value (ON / OFF possible)
- Screen: LCD touch screen (automatic backlight function)
- Sensor: Platinum EC / TDS Sensor, Single Junction pH sensor, Galvanic DO sensor



Wall-mount



Bench-top Mode



Auto Brightness



Touch-screen

HM-200 / HM-230 Hydromaster Portable pH/EC/TDS/Temp Monitor



HM-230

RANGE pH: 0~14pH
 EC: 0~9990 μ S/0~20mS
 TDS: 0~9990ppm
 Temp: 0~55°C/ 32~130°F
 PAR: 0~2200 μ mol (Only available in HM-230)

ACCURACY pH: ± 0.1 pH
 EC: $\pm 2\%$
 TDS: $\pm 2\%$
 Temp: $\pm 1^\circ\text{C}$ / $\pm 1.8^\circ\text{F}$
 PAR: $\pm 10\%$ (Only available in HM-230)

RESOLUTION pH: 0.1pH
 EC:
 0.1 μ S (0~99.9)
 1 μ S (100~999)
 10 μ S (1000~9990)
 0.01mS (0.01~20.00)
 TDS:
 0.1ppm (0~99.9)
 1ppm (100~999)
 10ppm (1000~9990)
 PAR: 1 μ mol (Only available in HM-230)
 Temp: 0.1°C/°F

ATC YES

CALIBRATION Digital

POWER 2 x AA

SIZE 14 x 6.6 x 2.8 cm
 (5.5 x 2.6 x 1.1 in)

WEIGHT 212g/7.5oz

FEATURES

- pH / EC / TDS / PAR (only available in HM-230) / temperature measurement
- 6 units: pH, μ S, mS, ppm 0.5 (NaCl) Scale & 0.7 (442™) Scale and PAR
- Automatic Temperature Compensation Function (ATC)
- Digital calibration
- Large readability LCD screen
- Simultaneous display of three measured values of pH / EC or TDS / temperature
- Automatically Measure PAR when PAR sensor connect (Only available in HM-230)
- Replaceable sensors
- Included Accessories: Protective cover, 2 AA batteries, pH 4 & 7 calibration solution, pH preservation solution



Removable Cover



Portable



Backlit



Rugged Body

REFRACTOMETERS

HM DIGITAL refractometers are combined with advanced measurement technology with easy control. Auto Temperature Control (ATC) function ensures reliability to produce accurate readings and a large backlit LCD screen.

HM Digital's refractometers are suitable to be used for the food & beverage service industries.



COMMON SPECIFICATION

SENSOR	Prism Sensor
ATC	YES (10~60°C)
CALIBRATION	Digital (Zero Correction)
SIZE	58 x 36 x 122 mm (2.3 x 1.4 x 4.8 in)
HOUSING	Water-resistant
POWER	2 x AAA
WEIGHT	149g/5.3oz (w/ cover & battery)

SCM-1000

RANGE	Brix: 0~55% Temp: 0-70°C / 32-158°F
RESOLUTION	Brix: 0.1% Temp: 0.1°C
ACCURACY	Brix: ±0.2% Temp: ±1.0°C

SCM-1000 (HI)

RANGE	Brix: 0~95% Temp: 0-70°C / 32-158°F
RESOLUTION	Brix: 0.1% Temp: 0.1°C
ACCURACY	Brix: ±0.2% Temp: ±1.0°C



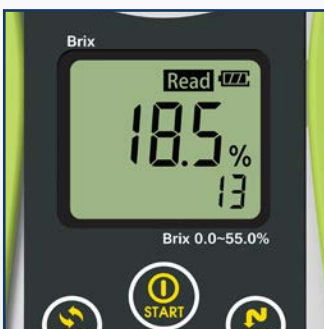
Superior Accuracy



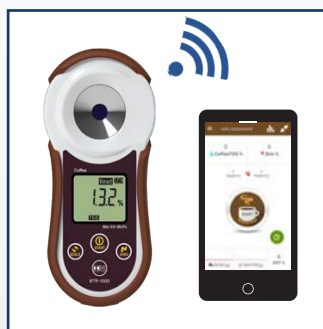
Backlit Display



Removable Silicone Case



Large LCD Display



Bluetooth Connection
(For BTR models)



Fast to Read



BTR-1000 (Brix)

RANGE	Brix: 0~55% Temp: 0-70°C / 32-158°F
RESOLUTION	Brix: 0.1% Temp: 0.1°C
ACCURACY	Brix: ±0.2% Temp: ±1.0°C
CONNECTION	Bluetooth



BTR-1000 (Salinity)

RANGE	Salinity(%): 0~28% Temp: 0-70°C / 32-158°F
RESOLUTION	Salinity: 0.1% Temp: 0.1°C
ACCURACY	Salinity: ±0.1% Temp: ±1.0°C
CONNECTION	Bluetooth



BTR-1000 (Beer)

RANGE	Brix: 0~26% Plato: 0~30°P SG: 1.000~1.129 / Temp: 0-70°C / 32-158°F
RESOLUTION	Brix/Plato: 0.1% SG: 0.001 Temp: 0.1°C
ACCURACY	Brix/Plato: ±0.2% SG: ±0.002 Temp: ±1.0°C
CONNECTION	Bluetooth



BTR-1000 (Coffee)

RANGE	Brix: 0~26% TDS: 0~23% Temp: 0-70°C / 32-158°F
RESOLUTION	Brix: 0.01% TDS: 0.01% Temp: 0.1°C
ACCURACY	Brix: ±0.2% TDS: ±0.2% Temp: ±1.0°C
CONNECTION	Bluetooth



BTR-1000 (Wine)

RANGE	Brix: 0~55% KMW: 0~46.4° Be: 0~29.8° Babo: 0~46.4° Oe: 0~256° TAVP: 0.0~37.9% Temp: 0~70°C (32~158°F)
RESOLUTION	0.1 (1.0 for Oe) Temp: 0.1°C
ACCURACY	Brix: ±0.2% Temp: ±1.0°C
CONNECTION	Bluetooth



RWM-1000 (Wine Refractometer)

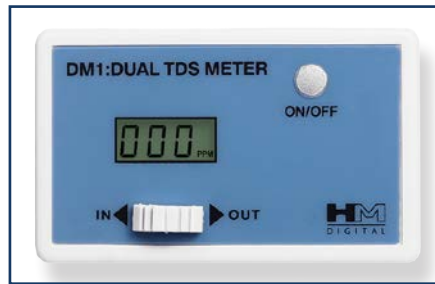
RANGE	Brix: 0~55% KMW: 0~46.4° Be: 0~29.8° Babo: 0~46.4° Oe: 0~256° TAVP: 0~37.9% Temp: 0~70°C (32~158°F)
RESOLUTION	0.1 (1.0 for Oe) Temp: 0.1°C
ACCURACY	Brix: ±0.2% Temp: ±1.0°C

* Not Available in the US/ North America



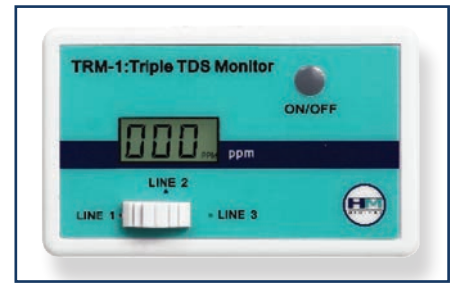
SM-1

RANGE	TDS: 0-9990 ppm
ACCURACY	± 2%
RESOLUTION	1ppm(0-999) 10ppm(1000-9990)
ATC	YES
CALIBRATION	Analog
SENSOR	1/4" (1EA)
SENSOR CABLE	62.2cm /2.0ft
POWER	2 x LR44
SIZE	7.6 x 2 x 4.7 cm (3 x 0.8 x 1.9 in)
WEIGHT	79g/ 2.8oz



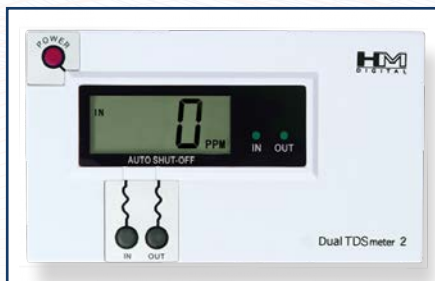
DM-1 Dual TDS Monitor

RANGE	TDS: 0-9990 ppm
ACCURACY	± 2%
RESOLUTION	1ppm(0-999) 10ppm(1000-9990)
ATC	YES
CALIBRATION	Analog
SENSOR	1/4" (2EA)
SENSOR CABLE	62.2cm /2.0ft
POWER	2 x LR44
SIZE	7.6 x 2 x 4.7 cm (3 x 0.8 x 1.9 in)
WEIGHT	79g/ 2.8oz



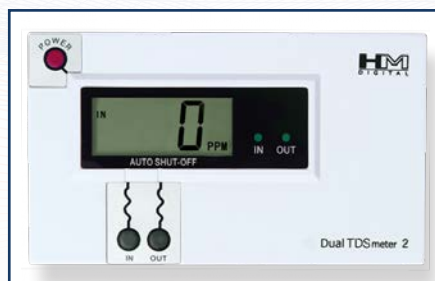
TRM-1

RANGE	TDS: 0-9990 ppm
ACCURACY	± 2%
RESOLUTION	1ppm(0-999) 10ppm(1000-9990)
ATC	YES
CALIBRATION	Analog
SENSOR	1/4" (3EA)
SENSOR CABLE	62.2cm /2.0ft
POWER	2 x LR44
SIZE	7.6 x 2 x 4.7 cm (3 x 0.8 x 1.9 in)
WEIGHT	79g/ 2.8oz



DM-2 Dual TDS Monitor

RANGE	TDS: 0-9990 ppm
ACCURACY	± 2%
RESOLUTION	1 (0-999) 10 (1000-9990)
ATC	YES
CALIBRATION	Digital
SENSOR	1/4" (2EA)
SENSOR CABLE	116.8cm/3.8ft shielded
POWER	2 x AA
SIZE	11.6 x 6.8 x 1.8 cm (4.6 x 2.6 x 0.7 in)
WEIGHT	224g/ 7.9oz



DM-2EC Dual TDS Monitor

RANGE	EC: 0-9990 µS
ACCURACY	± 2%
RESOLUTION	1 (0-999) 10 (1000-9990)
ATC	YES
CALIBRATION	Digital
SENSOR	1/4" (2EA)
SENSOR CABLE	116.8cm/3.8ft shielded
POWER	2 x AA
SIZE	11.6 x 6.8 x 1.8 cm (4.6 x 2.6 x 0.7 in)
WEIGHT	224g/ 7.9oz



QC-1

RANGE	TDS: 0-5000 ppm EC: 0-10,000 µS
ACCURACY	± 10%
SET POINT	75 ppm (150 µS)
ATC	NO
CALIBRATION	-
SENSOR	1/4" (1EA)
SENSOR CABLE	62.2cm /2.0ft
POWER	4 x LR44
SIZE	7.6 x 2 x 4.7 cm (3 x 0.8 x 1.9 in)
WEIGHT	40g/ 1.4oz



LSM-100

RANGE TDS: 0-9999 ppm
0-10.0 ppt
EC: 0-9999 μ S
0-20.00 mS

ACCURACY \pm 2%

RESOLUTION 0.1 (0-99)
1 (100-9999)
0.01 (ms/ppt)

ATC YES

CALIBRATION Digital

SENSOR 1/2" NPTF

SENSOR CABLE 3m/9.8ft

POWER 2 x AA

SIZE 12.0 x 7.5 x 2.6 cm
(4.7 x 2.9 x 1.0 in.)

WEIGHT 198g/ 7.0oz



LDM-100R Dual Rejection Monitor

RANGE TDS: 0-9999 ppm
0-10.0 ppt
EC: 0-9999 μ S
0-20.00 mS

ACCURACY \pm 2%

RESOLUTION 0.1 (0-99)
1 (100-9999)
0.01 (ms/ppt)

ATC YES

CALIBRATION Digital

SENSOR 1/2" NPTF (2EA)

SENSOR CABLE 3m/9.8ft

POWER 2 x AA

SIZE 12.0 x 7.5 x 2.6 cm
(4.7 x 2.9 x 1.0 in.)

WEIGHT 198g/ 7.0oz



FLM-3 Flow Meter

RANGE 0.8-8.0 LPM
0.2-2.1 GPM
0-99999 gallon/liter

ACCURACY \pm 10%

RESOLUTION 0.1 LPM/GPM;
1 gallon/liter

SET POINT Programmable

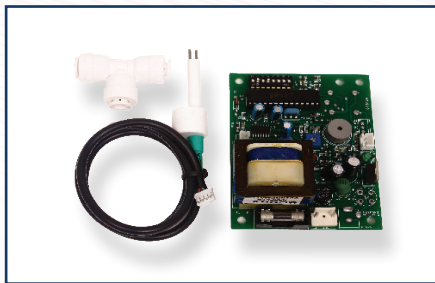
ALARM Sound

SENSOR 1/4" quick connect

POWER 2 x AA

SIZE 6.6 x 9.0 x 6.3 cm
(2.6 x 3.5 x 2.5 in.)

WEIGHT 207g/7.3oz



PM-1

RANGE TDS: 0-200 ppm

ACCURACY \pm 2%

ATC YES

SET POINT Set by dip switch

ALARM Light and Sound

SENSOR 116.8cm/3.8ft shielded

SENSOR 1/4" standard, also
CABLE available with 3/8" or
1/2"

POWER AC 110V / 220V

SIZE 8.9 x 6.9 x 3.8 cm
(3.5 x 2.7 x 1.5 in.)

WEIGHT 267 g/ 9.4 oz.



PM-2

RANGE TDS: 0-200 ppm

ACCURACY \pm 2%

ATC YES

SET POINT Set by dip switch

ALARM Light and Sound

SENSOR 116.8cm/3.8ft shielded

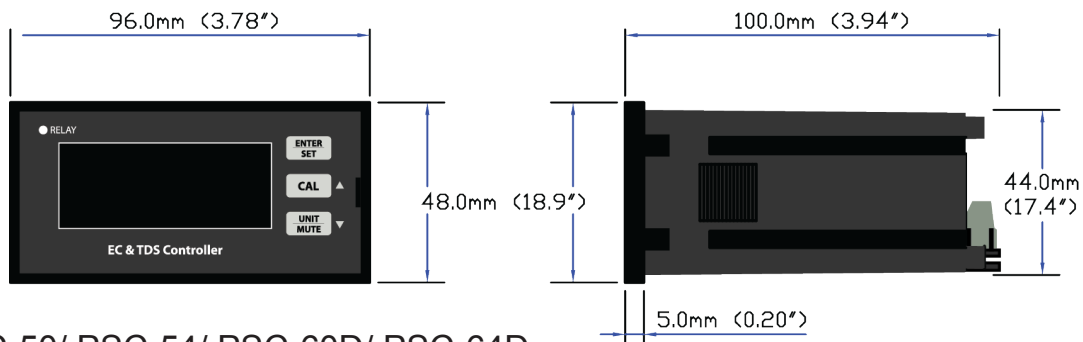
SENSOR 1/4" standard, also
CABLE available with 3/8" or
1/2"

POWER AC 110V / 220V

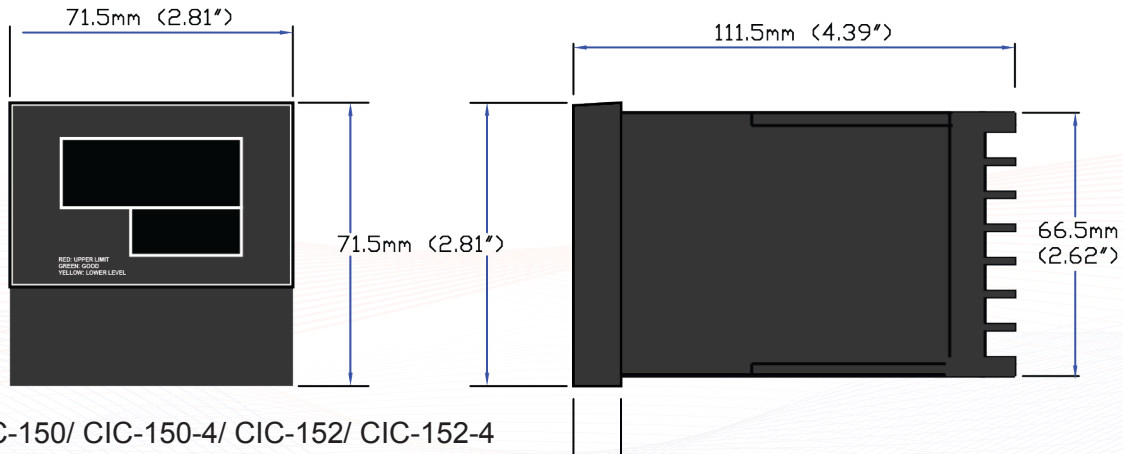
SIZE 12.9 x 7.3 x 6 cm
(5 x 2.9 x 2.4 in.)

WEIGHT 340 g/ 12 oz.

CONTROLLERS



FOR: PSC-50/ PSC-54/ PSC-60D/ PSC-64D



FOR : CIC-150/ CIC-150-4/ CIC-152/ CIC-152-4
PPH-1000/ PSC-150/ PSC-154



PSC-50 / PSC-54

RANGE TDS: 0-9999 ppm
0-10 ppt
EC: 0-9999 µS
0-20 mS

ACCURACY ± 2%

RESOLUTION 0.1 (0-99.9)
1 (100-9999)
0.01 (mS/ ppt)

ATC YES

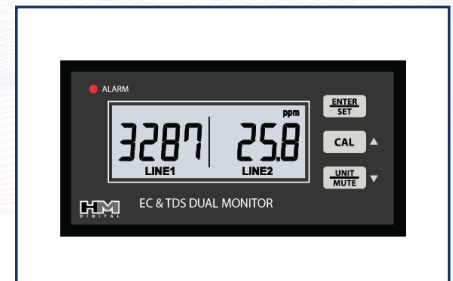
CALIBRATION Digital

OUTPUT SINGAL 4-20mA (PSC-54 ONLY)

SENSOR 1/2" NPTF, 3m shielded

POWER AC 110V / 230V

SIZE 96 x 48 x 100 mm
(3.8 x 1.9 x 3.9 in)



PSC-60D / PSC-64D

RANGE TDS: 0-9999 ppm
0-10 ppt
EC: 0-9999 µS
0-20 mS

ACCURACY ± 2%

RESOLUTION 0.1 (0-99.9)
1 (100-9999)
0.01 (mS/ ppt)

ATC YES

CALIBRATION Digital

OUTPUT SINGAL 4-20mA (PSC-64 ONLY)

SENSOR 1/2" NPTF, 3m shielded

POWER AC 110V / 230V

SIZE 96 x 48 x 100 mm
(3.8 x 1.9 x 3.9 in)



PSC-150

RANGE	0-9999 ppm 0-9999 μ S
ACCURACY	\pm 2%
RESOLUTION	0.1(0-999 ppm/ μ S) 1(1000-9999 ppm/ μ S)
ATC	YES
CALIBRATION	Digital
RELAY	Programmable
ALARM	Programmable
SENSOR	1/2" NPTF, 3m shielded
POWER	AC 110V / 230V
SIZE	71.5 x 71.5 x 111.5 mm (2.8 x 2.8 x 4.4 in)



PSC-154

RANGE	0-9999 ppm 0-9999 μ S
ACCURACY	\pm 2%
RESOLUTION	0.1(0-999 ppm/ μ S) 1(1000-9999 ppm/ μ S)
ATC	YES
CALIBRATION	Digital
OUTPUT SINGAL	4-20mA (PSC-154 ONLY)
RELAY	Programmable
ALARM	Programmable
SENSOR	1/2" NPTF, 3m shielded
POWER	AC 110V / 230V
SIZE	71.5 x 71.5 x 111.5 mm (2.8 x 2.8 x 4.4 in)



CIC-150 / CIC-150-4

RANGE	0-5000 ppm NaCl 0-8500 ppm 442 0-9999 μ S
ACCURACY	\pm 2%
RESOLUTION	0.1(0-999 ppm/ μ S) 1(1000-8500 ppm/ μ S)
ATC	YES
CALIBRATION	Digital
RELAY	One, upper and lower limit
ALARM	Programmable
SENSOR	1/2" NPTF, 3m shielded
POWER	AC 110V / 230V
SIZE	71.5 x 71.5 x 111.5 mm (2.8 x 2.8 x 4.4 in)



CIC-152 / CIC-152-4

RANGE	0-5000 ppm NaCl 0-8500 ppm 442 0-9999 μ S
ACCURACY	\pm 2%
RESOLUTION	0.1(0-999 ppm/ μ S) 1(1000-8500 ppm/ μ S)
ATC	YES
CALIBRATION	Digital
RELAY	Two, upper and lower limit
ALARM	Two independent alarms (max. and min)
SENSOR	1/2" NPTF, 3m shielded
POWER	AC 110V / 230V
SIZE	71.5 x 71.5 x 111.5 mm (2.8 x 2.8 x 4.4 in)



PS-203

RANGE	0-9999 ppm (mg/L)
ACCURACY	\pm 2%
RESOLUTION	0.1 ppm (0-99.9) 1 ppm (100-9999)
ATC	YES
CALIBRATION	Digital
RELAY	Two, Programmable
ALARM	Programmable
SENSOR	1/2" NPTF, 3m shielded
POWER	AC 110V / 230V
SIZE	96 x 96 x 125 mm (3.7 x 3.7 x 4.9 in)



PPH-1000

RANGE	0.01 – 14.00 pH
ACCURACY	\pm 0.1pH
RESOLUTION	0.01 pH / 0.1°C (0.1°F)
ATC	YES
CALIBRATION	Digital
RELAY	Two, upper and lower limit
ALARM	Programmable
SENSOR	3/4" Electrode 3m shielded
POWER	AC 110V / 230V
SIZE	71.5 x 71.5 x 111.5 mm (2.8 x 2.8 x 4.4 in)

SENSORS/ ACCESSORIES



SP-1-PSC

High quality construction
Stainless steel sensor pins
1/2" Thread (NPT)
Thermometer included
Pressure tested



SP-O2

ORP-200 Replacement probe
ABS material
Thermometer included



SP-P2

PH-200, COM-360 Replacement probe
ABS material
Glass pH sensor with reference tube
Thermometer included



SP-C1/ SP-C4

SP-C1= COM-100
SP-C4=COM-360
ABS material
Stainless steel sensor pins
Thermometer included



SP-C3

COM-300 Replacement probe
ABS material
Stainless steel sensor pins
Glass pH sensor with reference tube
Thermometer included



SP-C2/ SP-C5

C2: HM-100, HM-230
C5: HM-530
Platinum plated sensor pins
Stainless steel sensor pins



SP-P5

For HM Series (HM-100, HM-230, HM-530)
Glass pH probe with single junction Ag/AgCl, Sat, KCl gel reference tube



SP-P10

pH Probe for PPH-1000
Glass pH probe with single junction Ag/AgCl, Sat, KCl gel reference tube
3/4" Thread
For industrial uses



SP-2

For DM-1
Stainless steel sensors
1/4" Probe
24.5" Cable
8-pin Connector



SP-3

For DM-2
Stainless steel sensors
1/4" Probe
Shielded Cable
Dual 4-pin Connector



SP-5

For SM-1
Stainless steel sensors
1/4" Probe
Shielded Cable
Single 4-pin



CP-1000

1000 ppm TDS Calibration solution
20 x 20 ml Pack
NaCl @ 25°C / 77°F



PH-P4

4 pH Calibration solution
20 x 20 ml Pack



PH-P7

7 pH Calibration solution
20 x 20 ml Pack



ASP-20

20 Packs of assorted solutions
5 PH-STOR
5 PH-P4
5 PH-P7
5 CP-1000



PH-STOR

PH-STOR Electrode storage solution (60ml)
Bottle designed for multiple uses



ORP-STOR

ORP sensor storage solution
Bottle designed for multiple uses



YOUR FIRST STEP TO PERFECT WATER

Premier Water Testing Instruments

HM Digital, Inc. is a leading manufacturer of professional fluid testing instruments that test for EC, TDS, pH, ORP, temperature, and volume. Our products include handheld meters, in-line monitors, controllers, sensors, calibration solutions, and more.



1-310-410-3100
info@HMDigital.com
HMDigital.com

GENERAL CATALOG

HM DIGITAL INC.

Authorized Distributor